

TOP SECRET / MAJIC EYES ONLY

to radiation and electrical discharges. If the craft is functioning, but appears to be abandoned, it may be approached only by specially trained MJ-12 RED TEAM personnel wearing protective clothing. Any device that seems to be functioning should also be left to MJ-12 RED TEAM disposal. Complete craft and parts of crafts too large to be transported by covered transport will be disassembled, if this can be accomplished easily and quickly. If they must be transported whole, or on open flatbed trailers, they will be covered in such a manner as to camouflage their shape.

c. *Extraterrestrial Biological Entities.* EBEs must be removed to a top security facility as quickly as possible. Great care should be taken to prevent possible contamination by alien biological agents. Dead EBEs should be packed in ice at the earliest opportunity to preserve tissues. Should live EBEs be encountered, they should be taken into custody and removed to a top security facility by ambulance. Every effort should be taken to ensure EBE's survival. Personnel involvement with EBEs alive or dead must be kept to an absolute minimum. (See Chapter 5 for more detailed information on dealing with EBEs.)

5. Cleansing the Area

Once all material has been removed from the secured site, the immediate area will be thoroughly inspected to make sure that all traces of Extraterrestrial Technology have been removed. In the case of a crash, the surrounding area will be thoroughly gone over several times to ensure that nothing has been overlooked. The search area involved may vary according to local conditions, at the discretion of the officer in charge. When the officer in charge is satisfied that no further evidence of the event remains at the site, it may be evacuated.

6. Special or Unusual Conditions

The possibility exists that extraterrestrial craft may land or crash in heavily populated areas, where security cannot be maintained or where large segments of the population and the public press may witness these events. Contingency Plan MJ-1949-04P / 78 (TOP SECRET - EYES ONLY) should be held in readiness should the need to make a public disclosure become necessary.

MAJIC

MAJIC
mental
security
essential
personnel
LE
son
al law
nent
equ
GRO
ny
ote

17. Extraterrestrial Technology Classification Table

No.	Items	Description or condition	MI-12 Code	Receiving facility
1	Aircraft.	Intact, operational, or semi-intact aircraft of Extraterrestrial design and manufacture.	UA-002-6	Area 51 S-4
2	Intact device.	Any mechanical or electronic device or machine which appears to be undamaged and functional.	ID-301-F	Area 51 S-4
3	Damaged device.	Any mechanical or electronic device or machine which appears to be damaged but mostly complete.	DD-303-N	Area 51 S-4
4	Powerplant.	Devices and machines or fragments which are possible propulsion units, fuel, and associated control devices and panels.	PD-40-8G	Area 51 S-4
5	Identified fragments.	Fragments composed of elements or materials easily recognized as known to current science and technology, i.e.: aluminum, magnesium, plastic, etc.	IF-101-K	Area 51 S-4
6	Unidentified fragments.	Fragments composed of elements or materials not known to current science and technology and which exhibit unusual or extraordinary characteristics.	UF-103-M	Area 51 S-4
7	Supplies and provisions.	Non-mechanical or non-electronic materials of a support nature such as clothing, personal belongings, organic ingestibles, etc.	SP-331	Blue Lab WP-61
8	Living entity.*	Living non-human organisms in apparent good or reasonable health.	EBE-010	OPNAC BBS-01
9	Non-living entity.	Deceased non-human organisms or portions of organisms, organic remains and other suspect organic matter.	EBE-XO	Blue Lab WP-61
10	Media.	Printed matter, electronic recordings, maps, charts, photographs and film.	MM-54A	Building 21 KB-88
11	Weapons.	Any device or portion of a device thought to be offensive or defensive weaponry.	WW-010	Area 51 S-4

*Living entities must be contained in total isolation pending arrival of OPNAC personnel.

MJ-12 4838B

TOP SECRET / MAJIC EYES ONLY

TOP SECRET / MAJIC EYES ONLY

EXTRATERRESTRIAL TECHNOLOGY PACKING LIST

POINT OF ORIGIN	SHIPING CODE NO.	UNIT
FINAL DESTINATION	PACKED BY	DATE / TIME
PACKING METHOD	INSPECTED BY	DATE / TIME

NO.	ITEM	CLASSIFICATION NO.	NO.	ITEM	CLASSIFICATION NO.
1			21		
2			22		
3			23		
4			24		
5			25		
6			26		
7			27		
8			28		
9			29		
10			30		
11			31		
12			32		
13			33		
14			34		
15			35		
16			36		
17			37		
18			38		
19			39		
20			40		

REMARKS OR SPECIAL INSTRUCTIONS

RECEIVED BY _____ DATE / TIME _____ INSPECTED BY _____ DATE / TIME _____

MJ FORM 1-007
MAY 52

TOP SECRET / MAJIC EYES ONLY

SOM 01 - 2

Figure 2. MJ Form 1-007

9. Packaging and Packing Data

a. Domestic Shipment. Individual items are tagged and wrapped in a moisture-vaporproof barrier and heat sealed. They are then placed in a corrugated fiberboard box. The voids within the box are packed thoroughly

38B

TOP SECRET / MAJIC EYES ONLY
REPRODUCTION IN ANY FORM IS FORBIDDEN BY FEDERAL LAW.

TOP SECRET / MAJIC EYES ONLY

with a neutral cellulose wadding to prevent movement of the items. The box closure is sealed with gummed Kraft tape. MJ Form 1-007 is placed in a sealed manila envelope marked "MAJIC-12 ACCESS ONLY" and is firmly taped to the top of the box. The box is then cushioned at each corner and at the top and bottom with fiberboard inserts and is placed within a larger corrugated fiberboard box. The entire outer box closure is sealed with gummed Kraft tape. A label is affixed to the outer box bearing the following information: destination, shipping code number, and the warning "MAJIC-12 ACCESS ONLY."

b. *Overseas Shipment.* Items are packaged as described above except that desiccant and a humidity indicator are included within the inner corrugated fiberboard box. Next, the box is wrapped in a moisture-vaporproof carrier and heat sealed. Then, packaged items are placed in a

waterproof carton sealed with waterproof tape. The carton is placed in a water-grease-proof lined wooden shipping container. The shipping container is reinforced further with waterproof tape and the wooden shipping container is reinforced further with strips about 8 inches from each end. Shipping on the surface of the wooden shipping container. *Note:* The packaging and packing procedure details are given in the manual. Data for the handling, packaging, packing and non-living entities is provided in Chapter 5, Section 5.1.

TOP SECRET / MAJIC EYES ONLY

placed within a second carton. This second carton is placed within a shipping container. The lining is sealed and the shipping container is screwed shut. The shipping container is reinforced further by nailing two 1/4-inch metal strips across the top. The information is then stenciled on the shipping container.

The procedure described above applies to non-organic matter and shipping of organic matter as described in II of this manual.

TOP SECRET / MAJIC EYES ONLY
Access to this information is limited to personnel only. Clearance level 2. Unauthorized personnel are prohibited from this document.

from this document
ed persons require
the MJ-12 GRO
duction in any f
scribed notes

RECEIVING AND HANDLING

Section I. HANDLING UPON RECEIPT OF MATERIAL

a. Uncrating, Unpacking, and Checking

(fig. 3)

Note. The uncrating, unpacking, and checking procedure for containers marked "TOP SECRET / MAJIC-12 ACCESS ONLY" will be carried out by personnel with MJ-12 clearance. Containers marked in this manner will be placed in storage in a top security area until such time as authorized personnel are available for these procedures.

Be very careful when uncrating and unpacking the material. Avoid thrusting tools into the interior of the shipping container. Do not damage the packaging materials any more than is absolutely necessary to remove the specimens; these materials may be required for future packaging. Stow the interior packaging materials within the shipping container. When uncrating and unpacking the specimens, follow the procedure given in (1) through (11) below:

- (1) Unpack the specimens in a top security area to prevent access of unauthorized personnel.
- (2) Cut the metal wires with a suitable cutting tool, or twist them with pliers until the straps crystallize and break.
- (3) Remove screws from the top of the shipping container with a screw driver.
- (4) Cut the tape and seals of the case liner so that the waterproof paper will be damaged as little as possible.
- (5) Lift out the packaged specimens from the wooden case.
- (6) Cut the tape which seals the top flaps of the outer cartons; be careful not to damage the cartons.
- (7) Cut the barrier along the top heat sealed seam and carefully remove the inner carton.
- (8) Remove the sealed manila envelope from the top of the inner carton.
- (9) Open the inner carton and remove the fiberboard inserts, dessicant, and humidity indicator.
- (10) Lift out the heat sealed packaging containing the specimens; arrange them in an orderly manner for inspection.
- (11) Place all packaging material in the shipping container for use in future repacking.

b. Thoroughly check all items against the shipping documents. Carefully

J-12 4838B

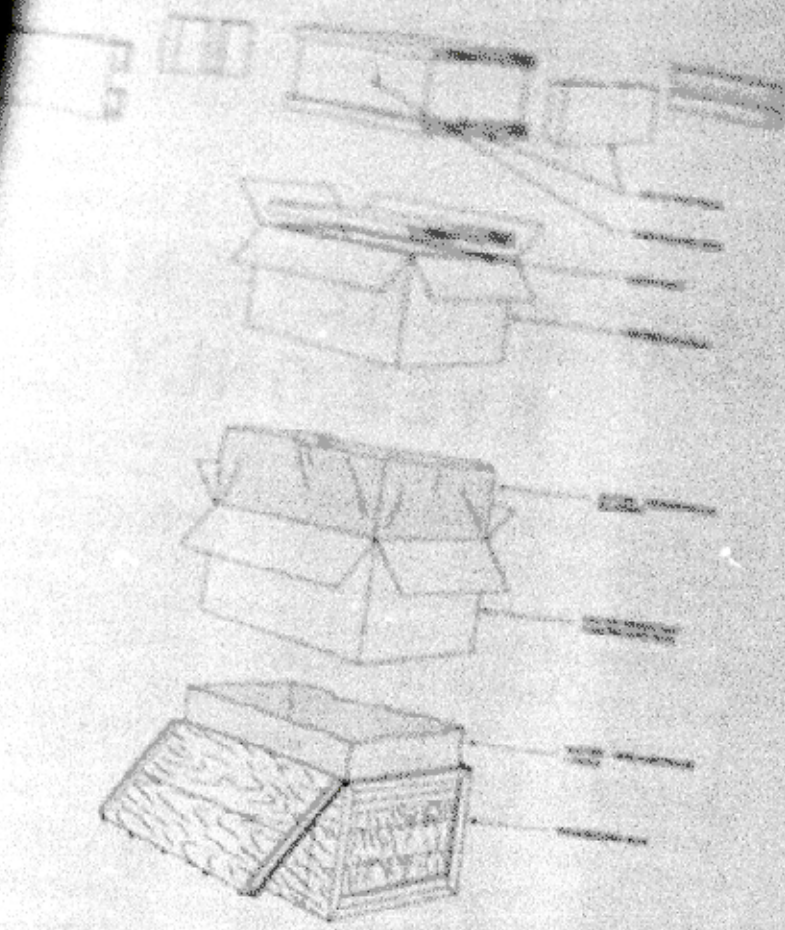


Figure 3. Packaging diagram

SCM 01-3

Inspect all items for possible damage during shipping or handling. Sort the items according to classification number in preparation for transfer to the designated laboratory or department. Laboratory or department personnel are responsible for transporting items to the designated areas. This will be accomplished as quickly as possible by covered transport escorted by security personnel.

12 4838B

TOP SECRET / MAJIC EYES ONLY
CHAPTER 5
EXTRATERRESTRIAL BIOLOGICAL ENTITIES

Section I. LIVING ORGANISMS

1. Scope

a. This section deals with encounters with living Extraterrestrial Biological Entities (EBEs). Such encounters fall under the jurisdiction of MJ-12 OPNAC BBS-01 and will be dealt with by this special unit only. This section details the responsibilities of persons or units making the initial contact.

2. General

Any encounter with entities known to be of extraterrestrial origin is to be considered to be a matter of national security and therefore classified TOP SECRET. Under no circumstance is the general public or the public press to learn of the existence of these entities. The official government policy is that such creatures do not exist, and that no agency of the federal government is now engaged in any study of extraterrestrials or their artifacts. Any deviation from this stated policy is absolutely forbidden.

3. Encounters

Encounters with EBEs may be classified according to one of the following categories:

- a. *Encounters initiated by EBEs.* Possible contact may take place as a result of overtures by the entities themselves. In these instances it is anticipated that encounters will take place at military installations or other secure locations selected by mutual agreement. Such meetings would have the advantage of being limited to personnel with appropriate clearance, away from public scrutiny. Although it is not considered very probable, there also exists the possibility that EBEs may land in public places without prior notice. In this case the OPNAC Team will formulate cover stories for the press and prepare briefings for the President and the Chiefs of Staff.
- b. *Encounters as the result of downed craft.* Contact with survivors of accidents or craft downed by natural events or military action may occur with little or no warning. In these cases, it is important that the initial contact be limited to military personnel to preserve security. Civilian witnesses in the area will be detained and debriefed by MJ-12. Contact with EBEs by military personnel not having MJ-12 or OPNAC clearance is to be strictly limited to action necessary to ensure the availability of the EBEs for study by the OPNAC Team.

TOP SECRET / MAJIC EYES ONLY

Isolation and Custody

a. EBEs will be detained by whatever means are necessary and removed to a secure location as soon as possible. Precautions will be taken by personnel coming in contact with EBEs to minimize the risk of disease as a result of contamination by unknown organisms. If the entities are wearing space suits or breathing apparatus of some kind, care should be exercised to prevent damage to these devices. While all efforts should be taken to assure the well-being of the EBEs, they must be isolated from any contact with unauthorized personnel. While it is not clear what provisions or amenities might be required by non-human entities, they should be provided if possible. The officer in charge of the operation will make these determinations, in accordance with the guidelines now exist to cover this area.

b. Injured or wounded entities will be treated by medical personnel assigned to the OPNAC Team. If the team medical personnel are not immediately available, First Aid will be administered by Medical Corps personnel at the initial site. Since little is known about EBE biological functions, aid will be confined to the stopping of bleeding, bandaging of wounds and splinting of broken limbs. No medications of any kind are to be administered as a result of the effects of terrestrial medications on non-human biological systems are not possible to predict. As soon as the injuries are considered stabilized, the EBEs will be moved by closed ambulance or other suitable conveyance to a secure location.

c. In dealing with any living Extraterrestrial Biological Entity, security is of paramount importance. All other considerations are secondary. Although it is preferable to maintain the physical well-being of any entity, the loss of EBE life is considered acceptable if conditions or delays to preserve that life in any way compromises the security of the operations.

d. Once the OPNAC Team has taken custody of the EBEs, their care and transportation to designated facilities becomes the responsibility of OPNAC personnel. Every cooperation will be extended to the team in carrying out their duties. OPNAC Team personnel will be given TOP PRIORITY at all times regardless of their apparent rank or status. No person has the authority to interfere with the OPNAC Team in the performance of its duties, by special direction of the President of the United States.

Section II. NON-LIVING ORGANISMS

1. Scope.

Ideally, retrieval for scientific study of cadavers and other biological remains will be carried out by medical personnel familiar with this type of procedure. Because of security considerations, such collection may need to be done by non-medical personnel. This section will provide guidance for retrieval, preservation, and removal of cadavers and remains in the field.

LL-12 4838B

TOP SECRET / MAJIC EYES ONLY

REPRODUCTION IN ANY FORM IS FORBIDDEN BY FEDERAL LAW

TOP SECRET / MAJIC EYES ONLY

6. Retrieval and Preservation.

a. The degree of decomposition of organic remains will vary depending on the length of time the remains have been lying in the open unprotected and may be accelerated by both local weather conditions and action by predators. Therefore, biological specimens will be removed from the crash site as quickly as possible to preserve the remains in as good a condition as possible. A photographic record will be made of all remains before they are removed from the site.

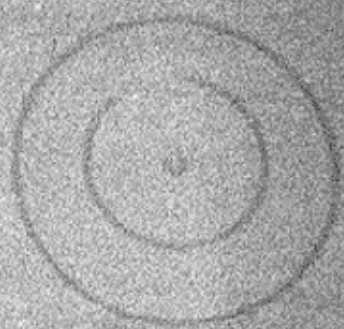
b. Personnel involved in this type of operation will take all reasonable precautions to minimize physical contact with the cadavers or remains being retrieved. Surgical gloves should be worn or, if they are not available, wool or leather gloves may be worn provided they are collected for decontamination immediately after use. Shovels and entrenching tools may be employed to handle remains provided caution is exercised to be certain no damage is done to the remains. Remains will be touched with bare hands only if no other means of moving them can be found. All personnel and equipment involved in recovery operations will undergo decontamination procedures immediately after those operations are completed.

c. Remains will be preserved against further decomposition as equipment and conditions permit. Cadavers and remains will be bagged or securely wrapped in waterproof coverings. Tarpaulins or foul weather gear may be used for this purpose if necessary. Remains will be refrigerated or packed with ice if available. All remains will be tagged or labeled and the time and date recorded. Wrapped remains will be placed on stretchers or in sealed containers for immediate removal to a secure facility.

d. Small detached pieces and material scraped from solid surfaces will be put in jars or other small capped containers if available. Containers will be clearly marked as to their contents and the time and date recorded. Containers will be refrigerated or packed with ice as soon as possible and removed to a secure facility.



TYPE B. ELLIPTICAL OR OVAL SHAPE
SIDE VIEW



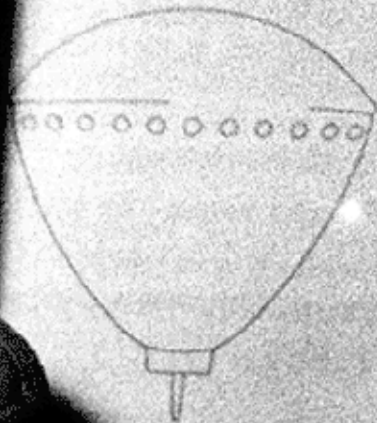
TYPE B. ELLIPTICAL OR OVAL
TOP OR BOTTOM VIEW



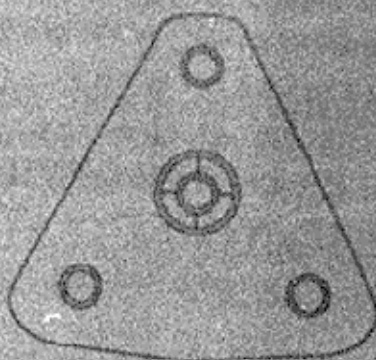
TYPE B. FUSelage OR CASAR SHAPE
SIDE VIEW



TYPE D. AIRFOIL OR TRIANGLE SHAPE
SIDE VIEW



TYPE C. CYLINDRICAL OR CONE SHAPE
SIDE VIEW



TYPE D. AIRFOIL OR TRIANGLE SHAPE
BOTTOM VIEW

The shapes in this diagram are gathered from documented sightings in Air Force and Central Intelligence
examination of wreckage collected from various sources years 1947 to 1953 inclusive.

Figure 4. Extraterrestrial craft.

SOM 01 - 4

GUIDE TO UFO IDENTIFICATION

Section I. UFOB GUIDE

7. Follow-up Investigations

A UFOB report is worthy of follow-up investigation when it contains information to suggest that a positive identification with a well known phenomenon may be made or when it characterizes an unusual phenomenon. The report should suggest almost immediately, largely by the cohesiveness and clarity of the data, that there is something of identification and/or scientific value. In general, reports which should be given consideration are those which involve several reliable observers, together or separately, and which concern sightings of greater duration than one quarter minute. Exception should be made to this when circumstances attending the report are considered to be extraordinary. Special attention should be given to reports which give promise to a "fix" on the position and to those reports involving unusual trajectories.

8. Rules of Thumb

Every UFOB case should be judged individually but there are a number of "rules of thumb," under each of the following headings, which should prove helpful in determining the necessity for follow-up investigation.

a. *Duration of Sighting.* When the duration of a sighting is less than 15 seconds, the probabilities are great that it is not worthy of follow-up. As a word of caution, however, should a large number of individual observers concur on an unusual sighting of a few seconds duration, it should not be dismissed.

b. *Number of Persons Reporting the Sighting.* Short duration sightings by single individuals are seldom worthy of follow-up. Two or three competent independent observations carry the weight of 10 or more simultaneous individual observations. As an example, 25 people at one spot may observe a strange light in the sky. This, however, has less weight than two reliable people observing the same light from different locations. In the latter case a position-fix is indicated.

c. *Distance from Location of Sightings to Nearest Field Unit.* Reports which meet the preliminary criterion stated above should all be investigated if their occurrence is in the immediate operating vicinity of the squadron concerned. For reports involving greater distances, follow-up necessity might be judged as being inversely proportional to the square of the distances concerned. For example, an occurrence 150 miles away might be con-

MJ-12 4838B

APPENDIX I
REFERENCES

Availability of items listed, check NSR 210-20-3, NSR 210-20-4, NSR 210-20-7

Regulations

Military Security (Safeguarding Security Information).
Maintenance of Supplies and Equipment, Maintenance Responsibilities and Shop Operation.

PH 405-5

Preparation and Submission of Requisitions for Supplies.

Publications

TOP SECRET - MAJIC EYES ONLY
Compartmentalized
national security of
ONLY ACCESS to the
mitted to personnel
SECURITY CLEARANCE LEVEL
Authorized personnel
by federal law.

TM 11-20-3

Index of Training Manuals.

TM 11-20-4

Index of Technical Manuals, Technical Regulations, Technical Bulletins, Supply Bulletin Lubrications Orders, and Modification Work Orders.

TM 11-20-5

Index of Administrative Publications.

TM 11-20-7

Index of Tables of Organization and Equipment, Reduction Tables, Tables of Organization, Tables of Equipment, Type Tables of Distribution, and Tables of Allowances.

This document for

persons requires

MJ-12 GROUP

ation in any form

scribed notes in

Test Equipment References

TM 11-654

Theory and Use of Electronic Test Equipment.

Photographic References

TM 11-404A

Photographic Print Processing Unit
AN / TPQ-9.

TM 11-405

Processing Equipment PH-406.

TM 11-401

Elements of Signal Photography.

TM 11-2363

Darkroom PH-392.

ORDER FORM

Majic Eyes Only: Earth's Encounters with ET Technology (320pgs-hardback) (\$30)....	QTY _____	\$ _____
DVD of "The Secret" as Seen on Sci-Fi Channel (\$18).....	QTY _____	\$ _____
Majestic Documents Book (190 pages) (\$18).....	QTY _____	\$ _____
CD "The Secret" Authenticity of MJ Documents (\$5).....	QTY _____	\$ _____
SOM1-01-ET Technology Recovery and Disposal (\$5).....	QTY _____	\$ _____
1st Annual Conference Proceedings (227pages) (\$35).....	QTY _____	\$ _____
CD Audio Set of 1st UFO Crash Retrieval Conf (\$160).....	QTY _____	\$ _____
2nd Annual Conference Proceedings (251 pages) (\$35).....	QTY _____	\$ _____
DVD Set of 2nd UFO Crash Retrieval Conf (\$240).....	QTY _____	\$ _____

Individual DVD's of 2nd Crash Con Speakers (\$20)

Nick Redfern – Crashed UFOs – Worldwide History.....	QTY _____	\$ _____
Jim Marrs – The Very First UFO Crash Retrieval 1896?.....	QTY _____	\$ _____
Don Ledger – Shag Harbor Incident.....	QTY _____	\$ _____
Peter Robbins – Brentwaters/ Woodbridge.....	QTY _____	\$ _____
Linda Moulton Howe – US Policy of Denial In the Interest of National Security.....	QTY _____	\$ _____
Grant Cameron – The Presidents Hard Evidence (both parts).....	QTY _____	\$ _____
Stephen Bassett – A Message to President Elect – Truth Retrieval.....	QTY _____	\$ _____
Dr. Robert Wood – Correlating Leonard Stringfield's Crash Reports.....	QTY _____	\$ _____
Paul Davids – The Road to Roswell – Undisputed facts and Factual Disputes.....	QTY _____	\$ _____
Dr. David Pace – Inside the USSR Majestic 12 Program.....	QTY _____	\$ _____
Ryan Wood – Murder and Majestic 12 – Investigation of UFO Related Deaths.....	QTY _____	\$ _____
Various Presenters: three 30 minute contributed talks: Paul Kimball: Crash at Aztec;		
Chuck Wade: Debris from Plains UFO crash; Ron Regehr: Ramey Office photographs.....	QTY _____	\$ _____

3rd Annual Conference Proceedings (200 pages) (\$35).....	QTY _____	\$ _____
DVD Set of 3rd UFO Crash Retrieval Conf (\$240/set).....	QTY _____	\$ _____

Individual DVD's of 3rd Crash Con Speakers (\$20/each)

Dr. Robert Wood- Examination of Reverse Engineering Claims.....	QTY _____	\$ _____
Dr. Tom Valone – UFO Energy & Antigravity Systems.....	QTY _____	\$ _____
Speaker Panel Moderated by Stephen Bassett.....	QTY _____	\$ _____
Dr. Roger Leir – The Varginha Brazil UFO crash.....	QTY _____	\$ _____
Linda Moulton Howe –1953, DRES, Millard County, UT Crash.....	QTY _____	\$ _____
Nick Redfern – Big Thicket, TX Crash & 1953 Kingman AZ crash.....	QTY _____	\$ _____
Richard Dolan – Sociological & Political Implications of Disclosure.....	QTY _____	\$ _____
Chuck Zukowski, Debbie Ziegelmeier – Roswell Archeological Dig Results.....	QTY _____	\$ _____
Reme Baca – San Antonio, NM 1945 UFO Crash.....	QTY _____	\$ _____
Jim Marrs – Keynote – Will Rocket Engines Go The Way Of The Dodos?.....	QTY _____	\$ _____
Ryan Wood –New Book – Majic Eyes Only.....	QTY _____	\$ _____
Peter Robbins – Orgone Energy & Wilhelm Reich & UFOs.....	QTY _____	\$ _____
Dr. Roger Leir – Analysis of Metal Fragments from UFO.....	QTY _____	\$ _____
Bill Hamilton – The Case for Reverse Engineering.....	QTY _____	\$ _____
Ken Storch – Arizona 1998 Landed UFO, Military & Murder.....	QTY _____	\$ _____

Individual DVD's of 4th Crash Con Speakers (\$20/each)

Stanton Friedman - The UFO "Why" Questions.....	QTY _____	\$ _____
Dr. Michael Salla – The Covert World of UFO Crash Retrievals.....	QTY _____	\$ _____
Richard Dolan – UFO Crash Retrievals: Leaks and Secrecy.....	QTY _____	\$ _____
Paul Schatzkin – Defying Gravity: Material on T. Townsend Brown.....	QTY _____	\$ _____
Ryan Wood – The Devils Hole UFO Crash Retrieval.....	QTY _____	\$ _____
Peter Merlin – How the Government Responds to Top Secret Crashes.....	QTY _____	\$ _____
Michael Lindemann – Scenarios of Contact.....	QTY _____	\$ _____
George Knapp – TV Journalist' Perspective on Ufology.....	QTY _____	\$ _____
Robert M. Wood, Ph.D. – Alien Viruses and Leaked Documents.....	QTY _____	\$ _____
Nick Redfern – Crashed UFO's and Bio-Warfare.....	QTY _____	\$ _____
Frank Feshino – The Braxton County Monster.....	QTY _____	\$ _____
Linda Moulton Howe – Military Voices: Firsthand Testimonies.....	QTY _____	\$ _____
Dr. Bruce Maccabee – December 6, 1950 UFO Crash Retrieval.....	QTY _____	\$ _____
Matthew E. Thuney – The Lummi Island Incident.....	QTY _____	\$ _____

1st Annual UFO Crash Retrieval Conference Audio Tape Set (2003) (\$160)....	QTY _____	\$ _____
Shipping and Handling (\$8.00).....		\$ _____
Total Paid.....		\$ _____

Please Print and Send Check, Money Order or Credit Card Info

Name: _____
 Address: _____ City: _____ State: _____ Zip: _____
 Phone: Work _____ Home _____
 Fax: _____ Email: _____

(Circle) Visa/MasterCard Number: _____ - _____ - _____ Expires: _____ / _____
 Security Code on back of card _____

Signature: _____